

KnoxExciseTax

File Edit View Favorites Tools Help

Back Forward Up Copy Paste Delete Search Folders

Address Go

File and Folder T

Other Places

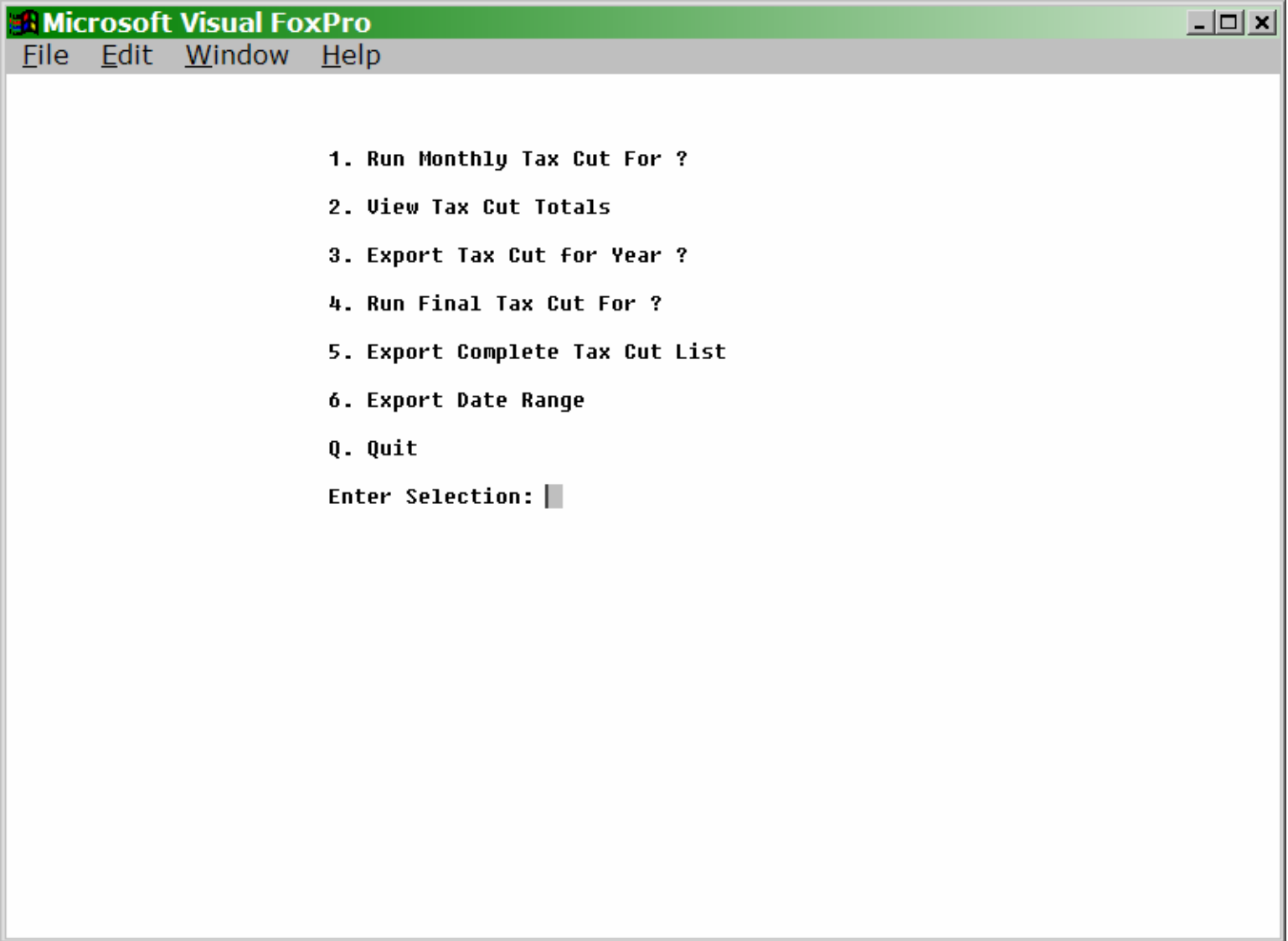
- Excise Docs
- My Documents
- My Computer
- My Network Places

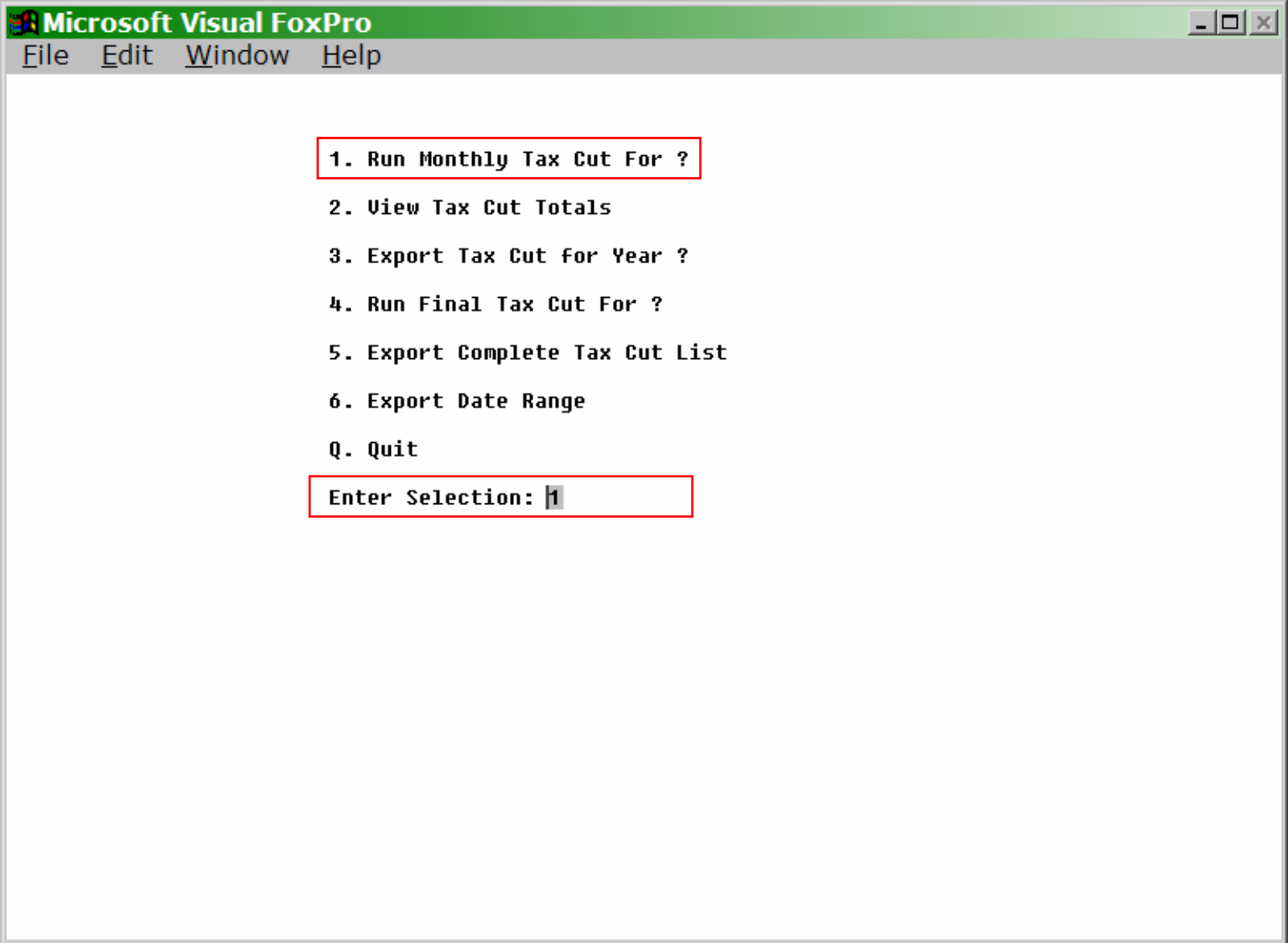
Details

taxcut.exe
Application
Date Modified:
Wednesday,
November 18,
2009, 11:02 AM
Size: 36.6 KB

Name	Size	Type
BACKUP		File
Batchfiles		File
Data		File
REPORTS		File
backup.exe	10 KB	Ap
browsedbf.exe	10 KB	Ap
resolve.exe	52 KB	Ap
taxcut.exe	37 KB	Ap
VFP6RUN.EXE	25 KB	Ap
VFP6R.DLL	3,295 KB	Ap
VFP6RENU.DLL	856 KB	Ap
BATCHFILES.CDX	10 KB	Mi
BATCHTOTALS.CDX	40 KB	Mi
TAXCUT.CDX	3 KB	Mi
TAXCUTDETAILS.CDX	5 KB	Mi
BATCHFILES.DBF	32 KB	Mi
BATCHTOTALS.DBF	678 KB	Mi
DATAASSESSOR.DBF	1,326 KB	Mi
DATAAUDITOR.DBF	1,248 KB	Mi
DATAGIS.DBF	1 KB	Mi
DATAVOTER.DBF	2,210 KB	Mi
FOXUSER.DBF	1 KB	Mi

Company: Data Pit Stop Inc File Version: 0.0.0.0 D 36.6 KB My Computer





Microsoft Visual FoxPro

File

Edit

Window

Help

Year:

2009

Month:

0

Percentage:

0.0000000000

Cut Amount:

0.00

Receipt:

Year: 2009
Month: 9
Percentage: 0.5612584100
Cut Amount: 125000.52
Receipt: A223D

When entering the percentage make sure to change it to a decimal so 50.123456% would be .50123456

Microsoft Visual FoxPro						
File Edit Table Window Help						
Tax Cut List, Use "Tab" = Toggle Selection, "Esc" when done.						
Selectio	Cutyear	Cutmonth	Filename	Totalitems	Exciseamt	Lotte
Hit Tab			42020090901MV662	148	8,859.90	
Hit Tab			42020090902MV663	129	9,696.90	
Hit Tab			42020090903MV664	121	7,203.62	
Hit Tab			42020090904MV665	209	12,450.98	1
Hit Tab			42020090905MV666	85	4,542.27	
Hit Tab			42020090906MV667	16	843.60	
Hit Tab			42020090907MV668	14	620.90	
Hit Tab			42020090908MV669	212	12,342.18	1
Hit Tab			42020090909MV670	92	4,704.18	
Hit Tab			42020090910MV671	104	6,496.92	
Hit Tab			42020090911MV672	175	12,052.48	1
Hit Tab			42020090912MV673	79	3,828.72	
Hit Tab			42020090913MV674	20	1,487.00	
Hit Tab			42020090914MV675	54	2,468.90	
Hit Tab			42020090915MV676	187	12,228.49	1
Hit Tab			42020090916MV677	143	11,378.31	1
Hit Tab			42020090917MV678	153	8,931.03	
Hit Tab			42020090918MV679	184	11,574.38	1
Hit Tab			42020090919MV680	83	4,645.65	
Hit Tab			42020090920MV681	12	733.20	
Hit Tab			42020090921MV682	75	4,910.25	
Hit Tab			42020090922MV683	177	9,676.80	
Hit Tab			42020090923MV684	131	8,747.83	
Hit Tab			42020090924MV685	92	6,291.87	
Hit Tab			42020090925MV686	122	6,641.10	

Microsoft Visual FoxPro							
File Edit Table Window Help							
Tax Cut List, Use "Tab" = Toggle Selection, "Esc" when done.							
Selectio	Cutyear	Cutmonth	Filename	Totalitems	Exciseamt	Lotte	
Hit Tab	2009	09	42020090909MV670	92	4,704.18		
Hit Tab	2009	09	42020090910MV671	104	6,496.92		
Hit Tab	2009	09	42020090911MV672	175	12,052.48	1	
Hit Tab	2009	09	42020090912MV673	79	3,828.72		
Hit Tab	2009	09	42020090913MV674	20	1,487.00		
Hit Tab	2009	09	42020090914MV675	54	2,468.90		
Hit Tab	2009	09	42020090915MV676	187	12,228.49	1	
Hit Tab	2009	09	42020090916MV677	143	11,378.31	1	
Hit Tab	2009	09	42020090917MV678	153	8,931.03		
Hit Tab	2009	09	42020090918MV679	184	11,574.38	1	
Hit Tab	2009	09	42020090919MV680	83	4,645.65		
Hit Tab	2009	09	42020090920MV681	12	733.20		
Hit Tab	2009	09	42020090921MV682	75	4,910.25		
Hit Tab	2009	09	42020090922MV683	177	9,676.80		
Hit Tab	2009	09	42020090923MV684	131	8,747.83		
Hit Tab	2009	09	42020090924MV685	92	6,291.87		
Hit Tab	2009	09	42020090925MV686	122	6,641.10		
Hit Tab	2009	09	42020090926MV687	60	3,010.58		
Hit Tab	2009	09	42020090927MV688	11	885.35		
Hit Tab	2009	09	42020090928MV689	40	3,442.00		
Hit Tab	2009	09	42020090929MV690	154	8,634.22		
Hit Tab	2009	09	42020090930MV691	127	8,324.76		
Hit Tab			42020091001MV692	118	8,181.70		
Hit Tab			42020091002MV693	161	9,978.47		
Hit Tab			42020091003MV694	78	5,065.95		

Microsoft Visual FoxPro							
File Edit Table Window Help							
Tax Cut List, Use "Tab" = Toggle Selection, "Esc" when done.							
Selectio	Cutyear	Cutmonth	Filename	Totalitems	Exciseamt	Lotte	
Hit Tab	2009	09	42020090909MV670	92	4,704.18		
Hit Tab	2009	09	42020090910MV671	104	6,496.92		
Hit Tab	2009	09	42020090911MV672	175	12,052.48	1	
Hit Tab	2009	09	42020090912MV673	79	3,828.72		
Hit Tab	2009	09	42020090913MV674	20	1,487.00		
Hit Tab	2009	09	42020090914MV675	54	2,468.90		
Hit Tab	2009	09	42020090915MV676	187	12,228.49	1	
Hit Tab	2009	09	42020090916MV677	143	11,378.31	1	
Hit Tab	2009	09	42020090917MV678	153	8,931.03		
Hit Tab	2009	09	42020090918MV679	184	11,574.38	1	
Hit Tab	2009	09	42020090919MV680	83	4,645.65		
Hit Tab	2009	09	42020090920MV681	12	733.20		
Hit Tab	2009	09	42020090921MV682	75	4,910.25		
Hit Tab	2009	09	42020090922MV683	177	9,676.80		
Hit Tab	2009	09	42020090923MV684	131	8,747.83		
Hit Tab	2009	09	42020090924MV685	92	6,291.87		
Hit Tab	2009	09	42020090925MV686	122	6,641.10		
Hit Tab	2009	09	42020090926MV687	60	3,010.58		
Hit Tab	2009	09	42020090927MV688	11	885.35		
Hit Tab	2009	09	42020090928MV689	40	3,442.00		
Hit Tab	2009	09	42020090929MV690	154	8,634.22		
Hit Tab	2009	09	42020090930MV691	127	8,324.76		
Hit Tab	2009	09	42020091001MV692	118	8,181.70		
Hit Tab			42020091002MV693	161	9,978.47		
Hit Tab			42020091003MV694	78	5,065.95		

Microsoft Visual FoxPro							
File Edit Table Window Help							
Tax Cut List, Use "Tab" = Toggle Selection, "Esc" when done.							
Selectio	Cutyear	Cutmonth	Filename	Totalitems	Exciseamt	Lotte	
Hit Tab	2009	09	42020090909MV670	92	4,704.18		
Hit Tab	2009	09	42020090910MV671	104	6,496.92		
Hit Tab	2009	09	42020090911MV672	175	12,052.48	1	
Hit Tab	2009	09	42020090912MV673	79	3,828.72		
Hit Tab	2009	09	42020090913MV674	20	1,487.00		
Hit Tab	2009	09	42020090914MV675	54	2,468.90		
Hit Tab	2009	09	42020090915MV676	187	12,228.49	1	
Hit Tab	2009	09	42020090916MV677	143	11,378.31	1	
Hit Tab	2009	09	42020090917MV678	153	8,931.03		
Hit Tab	2009	09	42020090918MV679	184	11,574.38	1	
Hit Tab	2009	09	42020090919MV680	83	4,645.65		
Hit Tab	2009	09	42020090920MV681	12	733.20		
Hit Tab	2009	09	42020090921MV682	75	4,910.25		
Hit Tab	2009	09	42020090922MV683	177	9,676.80		
Hit Tab	2009	09	42020090923MV684	131	8,747.83		
Hit Tab	2009	09	42020090924MV685	92	6,291.87		
Hit Tab	2009	09	42020090925MV686	122	6,641.10		
Hit Tab	2009	09	42020090926MV687	60	3,010.58		
Hit Tab	2009	09	42020090927MV688	11	885.35		
Hit Tab	2009	09	42020090928MV689	40	3,442.00		
Hit Tab	2009	09	42020090929MV690	154	8,634.22		
Hit Tab	2009	09	42020090930MV691	127	8,324.76		
Hit Tab			42020091001MV692	118	8,181.70		
Hit Tab			42020091002MV693	161	9,978.47		
Hit Tab			42020091003MV694	78	5,065.95		

Could not create Monthly Cut for: 2009-09

Batch Files Selected do not add up

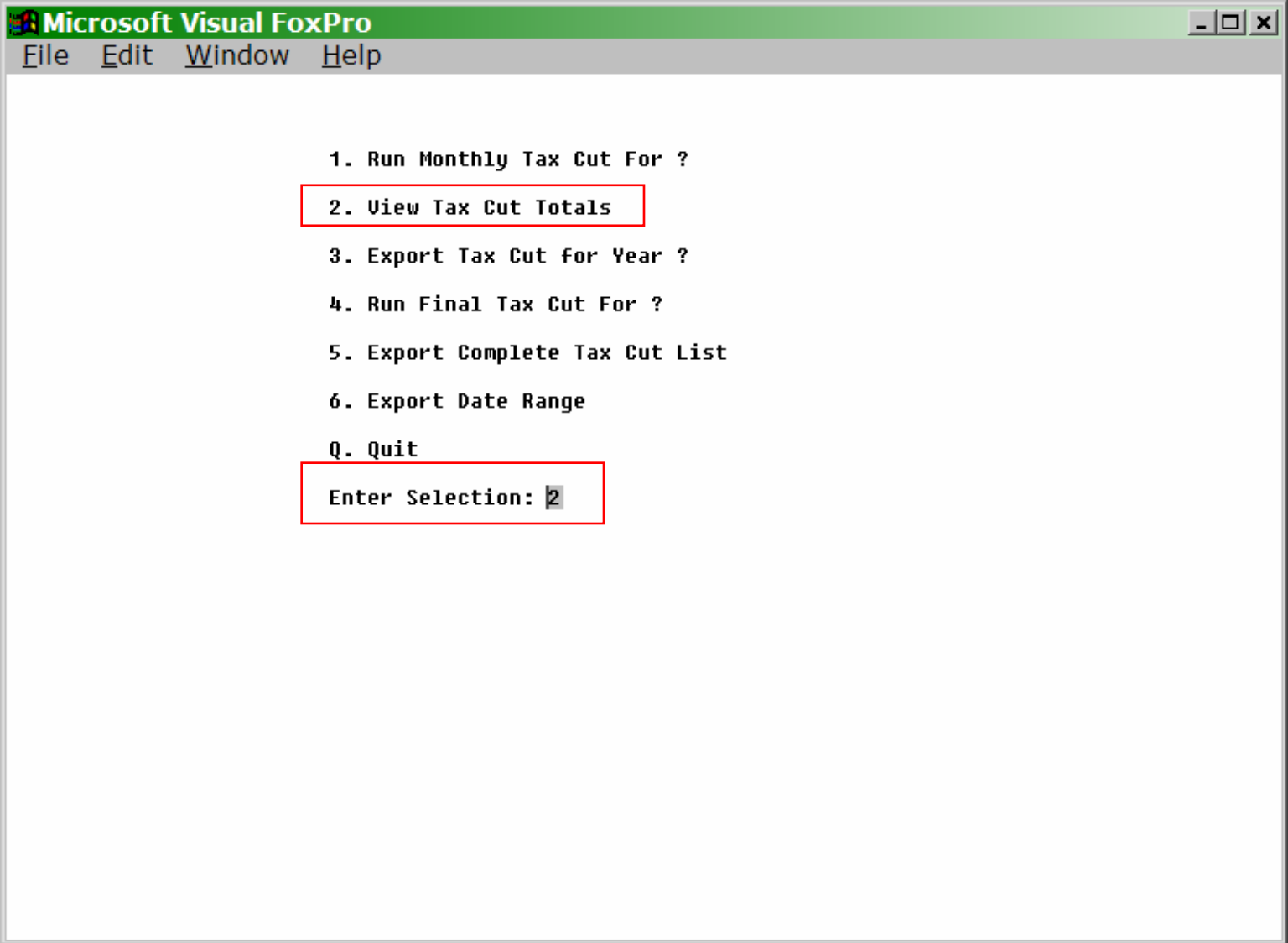
Percentage: 96,267.19

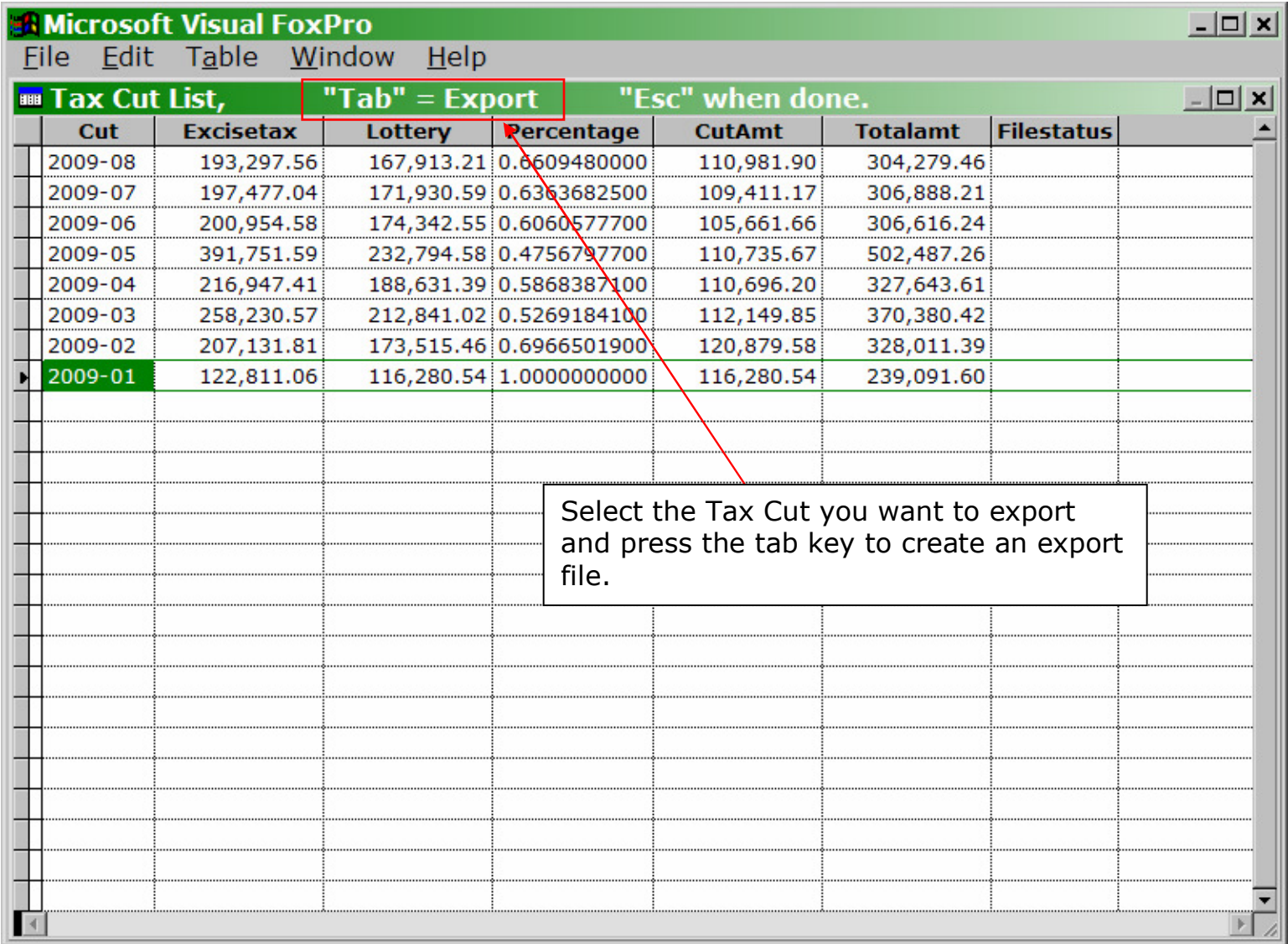
Cut Amount: 125,000.52

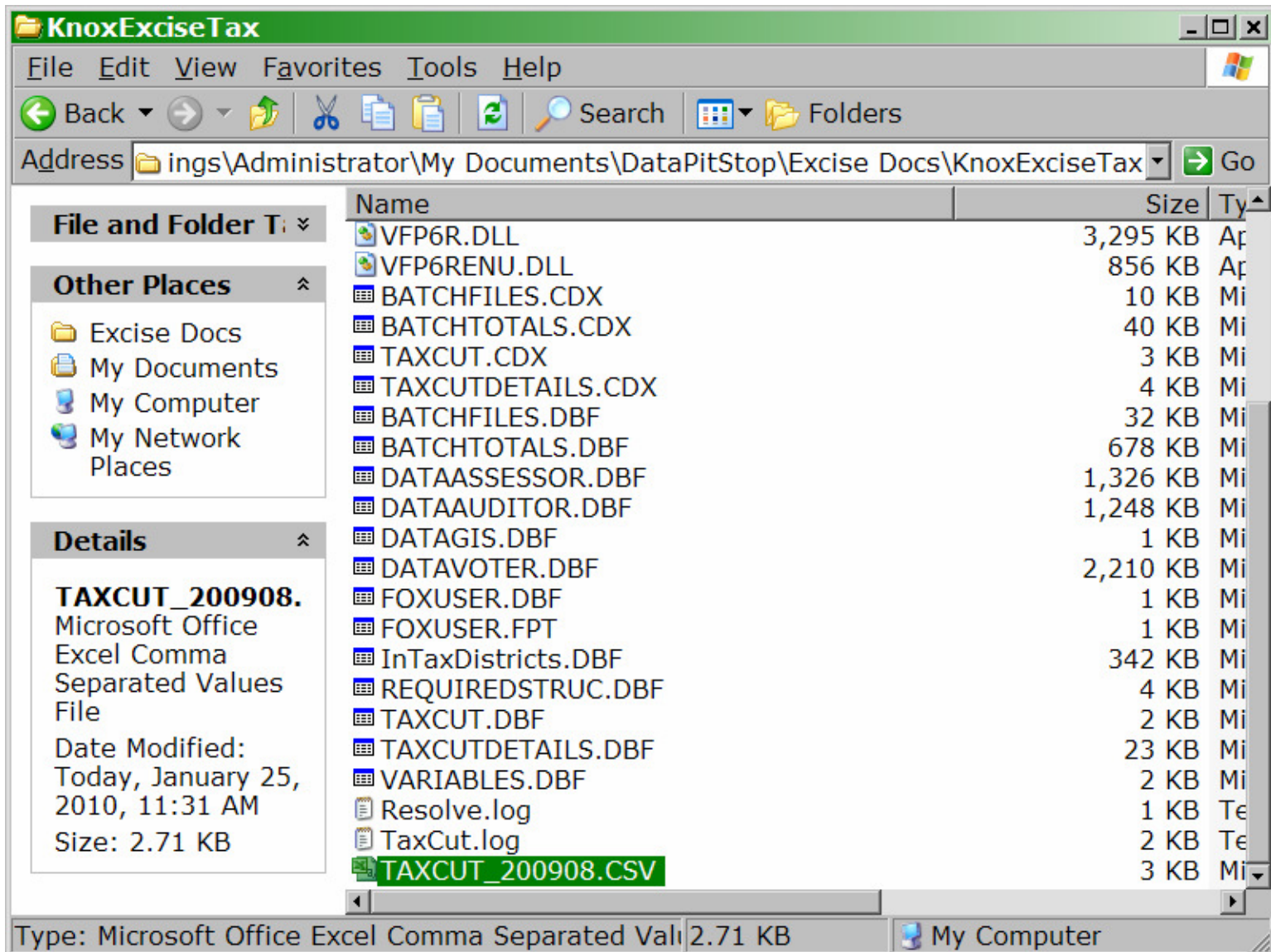
Difference: 28,733.32

Return to Menu:

If there is an offage of more then
.05 cents you will see this window.







Microsoft Excel - TAXCUT_200908.CSV												
File Edit View Insert Format Tools Data Window Stocks Help												
Type a question for help												
A1 Knox County (42)												
A	B	C	D	E	F	G	H	I	J	K	L	M
1	Knox County (42)											
2	Tax Cut for: 2009-08	Percentage: 0.6609480000										
3												
4	Dist	District Name	Count	Excise Tax	Lottery	Cut Amount	Total					
5	1	Busseron T	87	5241.26	4656.42	3077.65	8318.91					
6	2	Oaktown T	49	2292.98	1733	1145.42	3438.4					
7	3	Decker To	13	1376.4	1478.08	976.93	2353.33					
8	4	Harrison T	159	13828.55	13148.67	8690.59	22519.14					
9	5	Monroe Cit	51	2988.71	2461.5	1626.92	4615.63					
10	6	Johnson To	159	10129.27	8663.17	5725.9	15855.17					
11	7	Decker To	15	659.42	545.33	360.43	1019.85					
12	8	Palmyra To	149	9557.72	8841.84	5844	15401.72					
13	9	Steen Tow	82	4345.94	3675	2428.98	6774.92					
14	10	Wheatland	39	2113.15	1739.25	1149.55	3262.7					
15	11	Vigo South	65	4730.24	3989.5	2636.85	7367.09					
16	12	Bicknell Ci	192	11427.38	9979.17	6595.71	18023.09					
17	13	Edwardspo	24	701.06	379	250.5	951.56					
18	14	Sandborn	29	1486.74	1191.33	787.41	2274.15					
19	18	Washingto	119	8013.63	7311.5	4832.52	12846.15					
20	19	Bicknell Ci	49	2707.99	2138	1413.11	4121.1					
21	20	Bruceville	61	2534.17	1830.83	1210.08	3744.25					
22	21	Widner To	108	6277.78	5309.34	3509.2	9786.98					
23	22	Vincennes	1095	67011.78	57648.8	38102.88	105114.7					
24	23	Vincennes	439	31008.01	27228.24	17996.45	49004.46					
25	24	Vincennes	22	1128.78	934.67	617.77	1746.55					
26	25	Vigo North	53	2689.39	2242.66	1482.28	4171.67					
27	26	Vigo Centr	20	723.17	487.58	322.27	1045.44					
28	27	Vincennes	2	324.04	300.33	198.5	522.54					
29		GRAND TO	3081	193297.6	167913.2	110981.9	304279.5					
30												
31	Tax Cut is for Batches:											
32	42020090801MV631			42020090812MV642			42020090823MV653					
33	42020090802MV632			42020090813MV643			42020090824MV654					
34	42020090803MV633			42020090814MV644			42020090825MV655					
35	42020090804MV634			42020090815MV645			42020090826MV656					
36	42020090805MV635			42020090816MV646			42020090827MV657					
37	42020090806MV636			42020090817MV647			42020090828MV658					
38	42020090807MV637			42020090818MV648			42020090829MV659					
39	42020090808MV638			42020090819MV649			42020090830MV660					
40	42020090809MV639			42020090820MV650			42020090831MV661					
41	42020090810MV640			42020090821MV651								
42	42020090811MV641			42020090822MV652								

When you open the export file in excel you can format it by pressing and holding the [CTRL] key down while you press the [F] key one time.

Microsoft Excel - TAXCUT_200908.xls										
File Edit View Insert Format Tools Data Window Stocks Help										
Type a question for help										
100%										
Knox County (42)										
A	B	C	D	E	F	G	H	I	J	K
1	Knox County (42)									
2	Tax Cut for: 2009-08 Percentage: 0.6609480000									
3										
4	Dist	District Name	Count	Excise Tax	Lottery	Cut Amount	Total			
5	1	Busseron Township	87	5,241.26	4,656.42	3,077.65	8,318.91			
6	2	Oaktown Town	49	2,292.98	1,733.00	1,145.42	3,438.40			
7	3	Decker Township	13	1,376.40	1,478.08	976.93	2,353.33			
8	4	Harrison Township	159	13,828.55	13,148.67	8,690.59	22,519.14			
9	5	Monroe City Town	51	2,988.71	2,461.50	1,626.92	4,615.63			
10	6	Johnson Township	159	10,129.27	8,663.17	5,725.90	15,855.17			
11	7	Decker Town	15	659.42	545.33	360.43	1,019.85			
12	8	Palmyra Township	149	9,557.72	8,841.84	5,844.00	15,401.72			
13	9	Steen Township	82	4,345.94	3,675.00	2,428.98	6,774.92			
14	10	Wheatland Town	39	2,113.15	1,739.25	1,149.55	3,262.70			
15	11	Vigo South Township	65	4,730.24	3,989.50	2,636.85	7,367.09			
16	12	Bicknell City Vigo Township	192	11,427.38	9,979.17	6,595.71	18,023.09			
17	13	Edwardsport Town	24	701.06	379.00	250.50	951.56			
18	14	Sandborn Town	29	1,486.74	1,191.33	787.41	2,274.15			
19	18	Washington Township	119	8,013.63	7,311.50	4,832.52	12,846.15			
20	19	Bicknell City Washington Towns	49	2,707.99	2,138.00	1,413.11	4,121.10			
21	20	Bruceville Civil Town	61	2,534.17	1,830.83	1,210.08	3,744.25			
22	21	Widner Township	108	6,277.78	5,309.34	3,509.20	9,786.98			
23	22	Vincennes City I	1,095	67,011.78	57,648.80	38,102.88	105,114.66			
24	23	Vincennes Township Vincennes S	439	31,008.01	27,228.24	17,996.45	49,004.46			
25	24	Vincennes Township South Knox	22	1,128.78	934.67	617.77	1,746.55			
26	25	Vigo North Township	53	2,689.39	2,242.66	1,482.28	4,171.67			
27	26	Vigo Central Township	20	723.17	487.58	322.27	1,045.44			
28	27	Vincennes City Ii	2	324.04	300.33	198.50	522.54			
29	GRAND TOTALS:		3,081	\$193,297.56	\$167,913.21	\$110,981.90	\$304,279.46			
30										
31	Tax Cut is for Batches:									
32	42020090801MV631	42020090812MV642	42020090823MV653							
33	42020090802MV632	42020090813MV643	42020090824MV654							
34	42020090803MV633	42020090814MV644	42020090825MV655							
35	42020090804MV634	42020090815MV645	42020090826MV656							
36	42020090805MV635	42020090816MV646	42020090827MV657							
37	42020090806MV636	42020090817MV647	42020090828MV658							
38	42020090807MV637	42020090818MV648	42020090829MV659							
39	42020090808MV638	42020090819MV649	42020090830MV660							
40	42020090809MV639	42020090820MV650	42020090831MV661							
41	42020090810MV640	42020090821MV651								